

# **40RTE**

**BAG COMPANY**

**FOOTBALL**  
**FOURTH EDITION**







## COACHES BAG



### Features:

- Reinforced Straps
- I.D. Window 4.5x6.75
- Velcro Handle Closure
- Shoulder Straps
- End Straps
- #10 Heavy Duty Zipper

DIMENSIONS: 4CBD - 24x14x12

FABRIC OPTIONS: Mercury or Cordura

COLOURS: Customization Available

## INDIVIDUAL PLAYERS EQUIPMENT BAG

### Features:

- Reinforced Straps
- I.D. Window 4.5x6.75
- Velcro Handle Closure
- Optional Inside Helmet Pocket
- End Straps
- #10 Heavy Duty Zipper

DIMENSIONS: 4FPLD - 28x14x20

FABRIC OPTIONS: Mercury or Cordura

COLOURS: Customization Available



## EQUIPMENT BAG

### Features:

- Reinforced Straps
- I.D. Window 4.5x6.75
- Velcro Handle Closure
- Shoulder Straps
- End Straps
- #10 Heavy Duty Zipper

DIMENSIONS: 4EQUIP - 40x24x20

FABRIC OPTIONS: Mercury or Cordura

COLOURS: Customization Available







## BACK-UP HELMET BAG

### Features:

- Holds 4 Football Helmets
- Padded Walls for Added Protection, Ideal for Communication Helmets
- Individual I.D. Windows 2.25x3.5
- Designed to Fit Any Helmet
- #10 Heavy Duty Zipper

DIMENSIONS: 4BACKUPHEL - 32x22x10

FABRIC OPTIONS: Mercury or Cordura

COLOURS: Customization Available

## SMALL/ LARGE EXTREME WEATHER BALL BAG

### Features:

- Holds 20 Footballs
- Keeps Footballs Dry In All Conditions
- I.D. Window 4.5x6.75
- Extended Rain Flap to Cover "C" Zipper Opening
- End Straps
- Velcro Handle Closure
- #10 Heavy Duty Zipper

DIMENSIONS 4EXWBB - SMALL - 28x14x14

4EXWBBS - LARGE - 31x15x20

FABRIC OPTIONS: Mercury

COLOURS: Customization Available



LARGE



SMALL

## DELUXE LOCKER BAG

### Features:

- Velcro Closure
- I.D. Window 2.75x4.75
- Reinforced Straps
- #10 Heavy Duty Zipper

DIMENSIONS: 4LKRBD - 23x12x12 C-Shape Zipper

4LKRBD-1 - 23x12x12 w/ 1 End Pocket

4LKRBD-2 - 23x12x12 w/ 2 End Pocket

FABRIC OPTIONS: 600 Denier, Cordura, or Mercury

COLOURS: Customization Available



SHOWN WITH ADDITIONAL  
CUSTOM END STRAPS





## OFFICIAL MULTI GAME BALL BAG



### Features:

- Holds 12 Footballs
- Keeps Footballs Dry In All Conditions
- Extended Rain Flap to Cover "C" Zipper Opening
- End Straps
- Velcro Handle Closure
- #10 Heavy Duty Zipper



DIMENSIONS: 4GAMEBB - 26x19.5x12

FABRIC OPTIONS: Mercury

COLOURS: Customization Available



## SMALL GLOVE BAGS

### Features:

- 3 Individual Compartments 5.5x20
- Individual I.D. Windows 2.25x3.5
- Reinforced End Straps
- #10 Heavy Duty Zipper

DIMENSIONS: 4GLOVES - 20x16.5x11.5

FABRIC OPTIONS: Mercury or Cordura

COLOURS: Customization Available

## FACE GUARD BAGS

### Features:

- 3 Individual Compartments
- Shoulder Straps
- All Padded Walls
- #10 Heavy Duty Zipper

DIMENSIONS: 4FACEGB - 32x24x10

FABRIC OPTIONS: Mercury or Cordura

COLOURS: Customization Available



## WET BAGS

### Features:

- Reinforced Straps
- I.D. Window 4.5x6.75
- Velcro Handle Closure
- #10 Heavy Duty Zipper

DIMENSIONS: 4WETB - 31x15x20

FABRIC OPTIONS: Vinyl Mesh

COLOURS: Customization Available





## SMALL UNDERWEAR COMPARTMENT BAGS

### Features:

- Individual Compartment Size 8x8x12
- Individual I.D. Windows 2.25x3.5
- Designed to Hold Clothing, Equipment etc.
- Folds Up When Empty for Easy Storage
- Velcro Handle Closure
- Can be Made Into 6, 8 Compartments
- #10 Heavy Duty Zipper

DIMENSIONS: 4UNDBAG4 - 4 Compartments - 16x16x12  
4UNDBAG6 - 6 Compartments - 24x16x12  
4UNDBAG8 - 8 Compartments - 32x16x12

FABRIC OPTIONS: Mercury or Cordura  
COLOURS: Customization Available



## COMPARTMENT BAGS

### Features:

- Individual Compartment Size 8x10x20
- Individual I.D. Windows 2.25x3.5
- Designed to Hold Clothing, Equipment etc.
- Folds Up When Empty for Easy Storage
- Velcro Handle Closure
- Can be Made Into 6, 8 Compartments
- #10 Heavy Duty Zipper

DIMENSIONS: 4MCTB4 - 4 Compartments - 16x20x20  
4MCTB6 - 6 Compartments - 24x20x20  
4MCTB8 - 8 Compartments - 32x20x20

FABRIC OPTIONS: Mercury or Cordura  
COLOURS: Customization Available

## CUSTOM BAGS WITH DIVIDERS

### Features:

- 4 Inside Dividers: 2 Small and 2 Large to Separate Equipment
- Velcro Handle Closure
- I.D. Window 4.5x6.75
- End Straps
- #10 Heavy Duty Zipper

DIMENSIONS: 4CWD - 36x16x9  
FABRIC OPTIONS: Mercury or Cordura  
COLOURS: Customization Available







## DELUXE SHAVING KIT BAG

Features:

- I.D. Window 2.25x3.5

DIMENSIONS: 4SH1D - 12x6x6

FABRIC OPTIONS: 600 Denier, Cordura, or Mercury

COLOURS: Customization Available



## SINGLE HELMET BAG

Features:

- I.D. Window 2x3.5
- Vented Padded Mesh Bottom
- Ultra Fine Micro Fibre Lining
- Hanging Loop

DIMENSIONS: 4HBD - Fits 1 Helmet

FABRIC OPTIONS: 600 Denier, Cordura

COLOURS: Customization Available



## SHAVING KIT BAG

Features:

- I.D. Window 2.25x3.5

DIMENSIONS: 4SH1 - 10x4x6

FABRIC OPTIONS: 600 Denier or Cordura

COLOURS: Customization Available

## MULTI SHOE/ MULTI SANDAL BAG

Features:

- Individual Compartments
- PVC Mesh for Ventilation
- End Straps
- Velcro Closure
- I.D. Window 4.5x6.75
- #10 Heavy Duty Zipper

Multi Shoe Bag: 4MSHB - 24 Individual Pockets - 5x8

SM Multi Shoe Bag: 4MSHB - 15 Individual Pockets - 5x8

Multi Sandal Bag: 4MULSAND - 24 Individual Pockets - 5x5

SM Multi Sandal Bag: 4MULSAND - 15 Individual Pockets - 5x5

FABRIC OPTIONS: Mercury or Cordura

COLOURS: Customization Available







## MULTI CELL PHONE BAG

Features:

- 24 Cell Phone Compartments (With Latest Cell Phone Sizes)
- I.D. Window on Each Compartment
- Rolls Up for Easy Storage
- Customizing Available

DIMENSIONS: 4CELLBAG - HOLDS 24 PHONES

FABRIC OPTIONS: 600 Denier or Cordura

COLOURS: Customization Available



## SAND WEIGHT BAG

Features:

- Holds One 50lb Bag of Sand
- Reinforced Straps
- Velcro Handle Closure
- #10 Heavy Duty Zipper

DIMENSIONS: 4SAND - 23x16x4

FABRIC OPTIONS: Mercury

COLOURS: Customization Available

## MESH LAUNDRY BAGS

Features:

- Velcro Closure or Zipper
- Sublimated I.D. Tags
- Customization Available

DIMENSIONS: 4LB - 25x25

COLOURS: Black, white, red, blue, green, orange, yellow, navy, grey



## MONEY BAG

Features:

- Customization Available

DIMENSIONS: 4MON - 12x6

FABRIC OPTIONS: 600 Denier or Cordura

COLOURS: Customization Available



## MESH LAUNDRY BAG WITH LOOP

Features:

- Zipper
- Sublimated I.D. Tags
- Loop
- Customization Available

DIMENSIONS: 4LBWL - 14x12

COLOURS: Black, white, red, blue, green, orange, yellow, navy, grey



# 4ORIE

## DUAL FOLD ACCESSORIES BAG

Features:

- 10 Individual Compartments
- View Plast. Windows
- Folds for Easy Storage & Travel
- Fully Padded Walls
- Can be Made Into 6, 10, 12, 18 Compartments

DIMENSIONS: 4DUALACC - 10x6x16 Folded Up  
FABRIC OPTIONS: 600 Denier, Cordura, or Mercury  
COLOURS: Customization Available



NEW

## DELUXE DUAL FOLD ACCESSORIES BAG

Features:

- 20 Individual Compartments
- View Plast. Windows
- Folds for Easy Storage & Travel
- Fully Padded Walls

DIMENSIONS: 4DUALACCD - 18x6x16 Folded Up  
FABRIC OPTIONS: 600 Denier, Cordura, or Mercury  
COLOURS: Customization Available



## TRI-FOLD ACCESSORIES

Features:

- 14 Individual Compartments
- View Plast. Windows
- Folds for Easy Storage & Travel
- Fully Padded Walls
- #10 Heavy Duty Zipper

DIMENSIONS: 4TRIFACC - 19x10x19 Folded Up  
FABRIC OPTIONS: 600 Denier, Cordura, or Mercury  
COLOURS: Customization Available





# 4ORTE

NEW

## WATER BOTTLE BAG

Features:

- Holds 30 Water Bottles
- Fully Padded Walls with Foam
- I.D. Window 2.75x4.75
- #10 Zipper

DIMENSIONS: 4MWATER - 20x17x11

FABRIC OPTIONS: Mercury or Cordura

COLOURS: Customization Available



NEW

## DELUXE BENCH BAG

Features:

- 11 Interchangeable Compartments
- Compartments sizes:  
4 - 9x8, 4- 9x6, 2- 5.5x6 and 1- 11.5x6
- Folds for Easy Storage & Travel
- Has 3 "D" Rings for Hanging
- Can Have Custom Made Compartments to Fit Individual Needs
- #10 Heavy Duty Zipper

DIMENSIONS: 4DELUXBEN - 16x18 Folded Up

FABRIC OPTIONS: Cordura or Mercury

COLOURS: Customization Available



## ACCESSORIES COMPARTMENT BAGS

Features:

- Individual Compartment Size 6x6x5
- Individual I.D. Windows 2.25x3.5
- Designed to Hold Small Accessories
- Velcro Handle Closure
- Can be Made Into 6, 9, 12 Compartments
- #10 Heavy Duty Zipper

DIMENSIONS: 4ACCB6 - 6 Pocket - 12x18x5

4ACCB9 - 9 Pocket - 18x18x5

4ACCB12 - 12 Pocket - 24x18x5

FABRIC OPTIONS: 600 Denier, Cordura, or Mercury

COLOURS: Customization Available







## WEATHER BALL BOY BAG

Features:

- Holds 3 Footballs
- Fully Padded Walls with Foam
- Padded Foam Dividers

DIMENSIONS: 4WEABBB - 21x8x11

FABRIC OPTIONS: 600 Denier, Cordura, or Mercury

COLOURS: Customization Available



## EM HIP ORGANIZER

Features:

- View Plast. Pockets
- Can be Made Into 4, 6 Pockets
- Deluxe Come With Tool Pockets

DIMENSIONS: 10x3x7

FABRIC OPTIONS: 600 Denier or Cordura

COLOURS: Customization Available



DELUXE



REGULAR



## MULTI HAT BOX

Features:

- Fully Padded Walls with Foam
- I.D. Window 2.25x3.5
- Holds 72 Hats with a Divider
- Customizing Available
- #10 Heavy Duty Zipper

DIMENSIONS: 4MHBOX - 26x19x6

FABRIC OPTIONS: 600 Denier or Cordura

COLOURS: Customization Available



# 4ORTE

## INDIVIDUAL GARMENT BAG

Features:

- Holds 1 Suit
- I.D. Window 2.25x3.5
- #10 Heavy Duty Zipper

DIMENSIONS: 4IGARB - 26x19x6

FABRIC OPTIONS: 600 Denier, Cordura or PVC Mesh

COLOURS: Customization Available



## CUSTOM SUIT BAG

Features:

- Holds 2 Suits
- High End Wally Lock for Hang Lock
- I.D. Window 2.25x3.5
- 2 External Zipper Pockets
- #10 Heavy Duty Zipper

DIMENSIONS: 4SUITB - HOLDS 2 SUITS

FABRIC OPTIONS: 600 Denier or Cordura

COLOURS: Customization Available



HANG LOCK

# 4ORTE





## HAT ORGANIZER BAG

Features:

- Plastic or Foam Walls
- Clear View Top
- I.D. Window 1x3.75
- Holds Approx. 12-14 Hats
- #10 Heavy Duty Zipper

DIMENSIONS: 4HATOG - 15x8.5x6.5

FABRIC OPTIONS: 600 Denier or Cordura

COLOURS: Customization Available



## EQUIPMENT ORGANIZER BAG

Features:

- I.D. Window 1x3.75
- Custom features available
- Reinforced Plastic Walls
- #10 Heavy Duty Zipper

DIMENSIONS: SINSKOB - 16x13.5x5

FABRIC OPTIONS: 600 Denier, Cordura

COLOURS: Customization Available

## ORGANIZER BAG WITH ADJUSTABLE DIVIDER

Features:

- I.D. Window 1x3.75
- Custom features available
- Reinforced Plastic Walls
- #10 Heavy Duty Zipper

DIMENSIONS: ORGWDIV - 16x13.5x5

FABRIC OPTIONS: 600 Denier, Cordura

COLOURS: Customization Available





# 4ORTE

NEW

## DELUXE SMALL TRUNK ELIMINATOR BAG



### Features:

- Fully Padded Walls with Foam
- I.D. Window 2.75x4.75
- Can Hold 7 Small Organizer Bags
- #10 Zipper
- Velcro Loop Inner Lid
- Zipper Flap For Protection
- Clear Zipper Removable Pouches That Can Also Interchange With Deluxe Bench Bag
- Includes The Following Pouches: 3 - 9x8, 2 - 9x6, 2 - 5.5x6

DIMENSIONS: 4TRUNKSDEL - 30x14x10

FABRIC OPTIONS: Mercury or Cordura

COLOURS: Customization Available

## SMALL ORGANIZER BAG

### Features:

- Plastic Walls
- Clear View Top
- I.D. Window 1x3.75
- #10 Heavy Duty Zipper

DIMENSIONS: 4ORGIN - 12x8x4

FABRIC OPTIONS: 600 Denier or Cordura

COLOURS: Customization Available



## MEDIUM TRUNK ELIMINATOR BAG

### Features:

- Fully Padded Walls with Foam
- I.D. Window 2.25x3.5
- Hold 10 small organizer bags 12x8x4
- #10 Heavy Duty Zipper
- Zipper Flap For Protection

DIMENSIONS: 4TRUNKM - 44x14x10

FABRIC OPTIONS: Mercury or Cordura

COLOURS: Customization Available





# 4ORTE

## MULTI EQUIPMENT TRUNKELIMINATOR BAG

Features:

- Fully Padded Walls with Foam
- Reinforced straps
- I.D. Window 2.25x3.5
- HOLDS 6 ORGANIZER BAGS 16x13.5x5
- OR HOLDS 8 ORGANIZER BAGS 15x8.5x6.5
- #10 Heavy Duty Zipper
- Zipper Flap For Protection

DIMENSIONS: 4MULTISKBAG - 28x18x16

FABRIC OPTIONS: Mercury or Cordura

COLOURS: Customization Available



## LARGE TRUNK ELIMINATOR BAG

Features:

- Fully Padded Walls with Foam
- I.D. Window 2.25x3.5
- Holds 16 small organizer bags 12x8x4
- #10 Heavy Duty Zipper
- Zipper Flap For Protection

DIMENSIONS: 4TRUNKL - 36x26x10

FABRIC OPTIONS: Mercury or Cordura

COLOURS: Customization Available







## WE CUSTOMIZE TO MEET YOUR NEEDS

\*UPGRADABLE OPTIONS INCLUDE THE FOLLOWING\*

### WEBBING OPTIONS



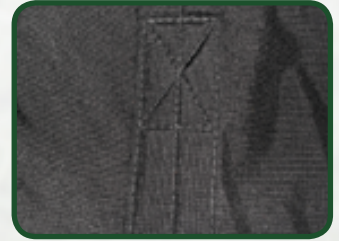
STANDARD NYLON



2 COLOR WEBBING

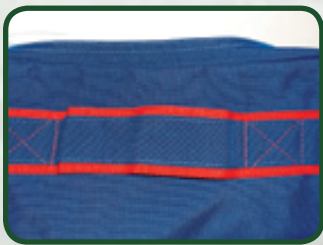


CORDURA ON WEBBING



PADDED CORDURA

### END STRAP OPTIONS



STANDARD NYLON  
\*2 COLOR SHOWN\*



PADDED CORDURA

### PIPING OPTIONS



STANDARD



CORDURA WRAPPED

### ZIPPER OPENING OPTIONS



STRAIGHT

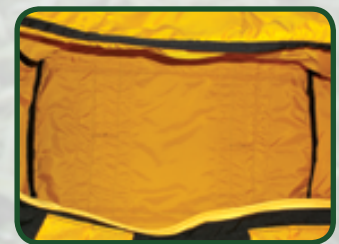


C - SHAPED OPENING

### INSIDE OPTIONS



STANDARD



CONTRASTING LINER

### INSIDE SKATE POCKETS



ZIPPER



STANDARD

### 3 COLOUR STRAPS



PADDED



WEBBING



# 4ORTE

## A TOUGH WORLD DEMANDS A DURABLE FABRIC.

With high tenacity fiber technology, exceptional tear strength and outstanding abrasion resistance, CORDURA® fabric adds tough-as-nails durability to your luggage. The kind of durability every traveler wants, but not all fabrics can deliver. So remember, accept no substitutes. For more on our durable fabric technologies, visit [CORDURA.com](http://CORDURA.com)



**CORDURA**  
F A B R I C

PHONE: 519-455-4141  
1-877-94-4ORTE (6783)  
FAX: 519-455-5903

50 CHARTERHOUSE CR. UNIT 2  
LONDON ONTARIO CANADA  
N5W 5V5

[WWW.4ORTE.COM](http://WWW.4ORTE.COM)