

40RTE

BAG COMPANY

FOOTBALL
FIFTH EDITION





COACHES BAG



Features:

- Reinforced Straps
- I.D. Window 4.5x6.75
- Velcro Handle Closure
- Shoulder Straps
- End Straps
- #10 Heavy Duty Zipper

DIMENSIONS: 4CBD - 24x14x12

FABRIC OPTIONS: Mercury or Cordura

COLOURS: Customization Available

INDIVIDUAL PLAYERS EQUIPMENT BAG

Features:

- Reinforced Straps
- I.D. Window 4.5x6.75
- Velcro Handle Closure
- Optional Inside Helmet Pocket
- End Straps
- #10 Heavy Duty Zipper

DIMENSIONS: 4FPLD - 28x14x20

FABRIC OPTIONS: Mercury or Cordura

COLOURS: Customization Available



EQUIPMENT BAG

Features:

- Reinforced Straps
- I.D. Window 4.5x6.75
- Velcro Handle Closure
- Shoulder Straps
- End Straps
- #10 Heavy Duty Zipper

DIMENSIONS: 4EQUIP - 40x24x20

FABRIC OPTIONS: Mercury or Cordura

COLOURS: Customization Available





SHOWN WITH ADDITIONAL
CUSTOM END STRAPS

DELUXE LOCKER BAG

Features:

- Velcro Closure
- I.D. Window 2.75x4.75
- Reinforced Straps
- #10 Heavy Duty Zipper

DIMENSIONS: 4LKRBD - 23x12x12 C-Shape Zipper
 4LKRBD-1 - 23x12x12 w/ 1 End Pocket
 4LKRBD-2 - 23x12x12 w/ 2 End Pocket

FABRIC OPTIONS: 600 Denier, Cordura, or Mercury
 COLOURS: Customization Available

COMPARTMENT BAGS

Features:

- Individual Compartment Size 8x10x20
- Individual I.D. Windows 2.25x3.5
- Designed to Hold Clothing, Equipment etc.
- Folds Up When Empty for Easy Storage
- Velcro Handle Closure
- Can be Made Into 6, 8 Compartments
- #10 Heavy Duty Zipper

DIMENSIONS: 4MCTB4 - 4 Compartments - 16x20x20
 4MCTB6 - 6 Compartments - 24x20x20
 4MCTB8 - 8 Compartments - 32x20x20

FABRIC OPTIONS: Mercury or Cordura
 COLOURS: Customization Available



CUSTOM BAGS WITH DIVIDERS

Features:

- 4 Inside Dividers: 2 Small and 2 Large to Separate Equipment
- Velcro Handle Closure
- I.D. Window 4.5x6.75
- End Straps
- #10 Heavy Duty Zipper

DIMENSIONS: 4CWD - 36x16x9
 FABRIC OPTIONS: Mercury or Cordura
 COLOURS: Customization Available



WEATHER BALL BOY BAG

Features:

- Holds 3 Footballs
- Fully Padded Walls with Foam
- Padded Foam Dividers

DIMENSIONS: 4WEABBB - 21x8x11

FABRIC OPTIONS: 600 Denier, Cordura, or Mercury

COLOURS: Customization Available

SMALL/ LARGE EXTREME WEATHER BALL BAG

Features:

- Holds 20 Footballs
- Keeps Footballs Dry In All Conditions
- I.D. Window 4.5x6.75
- Extended Rain Flap to Cover "C" Zipper Opening
- End Straps
- Velcro Handle Closure
- #10 Heavy Duty Zipper

DIMENSIONS 4EXWBBS - SMALL - 28x14x14

4EXWBBS - LARGE - 31x15x20

FABRIC OPTIONS: Mercury

COLOURS: Customization Available



LARGE



SMALL



OFFICIAL MULTI GAME BALL BAG

Features:

- Holds 12 Footballs
- Keeps Footballs Dry In All Conditions
- Extended Rain Flap to Cover "C" Zipper Opening
- End Straps
- Velcro Handle Closure
- #10 Heavy Duty Zipper

DIMENSIONS: 4GAMEBB - 26x19.5x12

FABRIC OPTIONS: Mercury

COLOURS: Customization Available



NEW

FIELD HELMET BAG

Features:

- Holds 6 Football Helmets
- Terry Cloth Liner For Reduce Condensation Buildup
- Padded Walls for Added Protection, Ideal for Communication Helmets
- I.D. Window 2.75x4.75
- Designed to Fit Any Helmet
- #10 Reverse Zipper

DIMENSIONS: 4FIELDHEL6 - 32x22x15

FABRIC OPTIONS: Mercury or Cordura

COLOURS: Customization Available

SINGLE HELMET BAG

Features:

- I.D. Window 2x3.5
- Vented Padded Mesh Bottom
- Ultra Fine Micro Fibre Lining
- Hanging Loop

DIMENSIONS: 4HBD - Fits 1 Helmet

FABRIC OPTIONS: 600 Denier, Cordura

COLOURS: Customization Available



BACK-UP HELMET BAG

Features:

- Holds 4 Football Helmets
- Padded Walls for Added Protection, Ideal for Communication Helmets
- Individual I.D. Windows 2.25x3.5
- Designed to Fit Any Helmet
- #10 Heavy Duty Zipper

DIMENSIONS: 4BACKUPHEL - 32x22x10

FABRIC OPTIONS: Mercury or Cordura

COLOURS: Customization Available

SMALL GLOVE BAGS

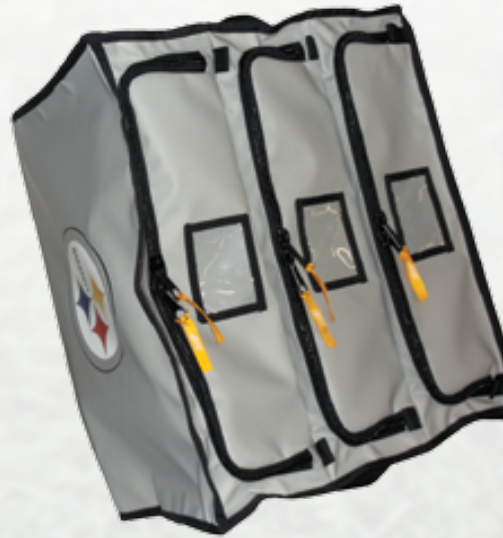
Features:

- 3 Individual Compartments 5.5x20
- Individual I.D. Windows 2.25x3.5
- Reinforced End Straps
- #10 Heavy Duty Zipper

DIMENSIONS: 4GLOVES - 20x16.5x11.5

FABRIC OPTIONS: Mercury or Cordura

COLOURS: Customization Available



FACE GUARD BAGS

Features:

- 3 Individual Compartments
- Shoulder Straps
- All Padded Walls
- #10 Heavy Duty Zipper

DIMENSIONS: 4FACEGB - 32x24x10

FABRIC OPTIONS: Mercury or Cordura

COLOURS: Customization Available

SMALL UNDERWEAR COMPARTMENT BAGS

Features:

- Individual Compartment Size 8x8x12
- Individual I.D. Windows 2.25x3.5
- Designed to Hold Clothing, Equipment etc.
- Folds Up When Empty for Easy Storage
- Velcro Handle Closure
- Can be Made Into 6, 8 Compartments
- #10 Heavy Duty Zipper

DIMENSIONS: 4UNDBAG4 - 4 Compartments - 16x16x12

4UNDBAG6 - 6 Compartments - 24x16x12

4UNDBAG8 - 8 Compartments - 32x16x12

FABRIC OPTIONS: Mercury or Cordura

COLOURS: Customization Available



NEW

PADDED SHOE BAG

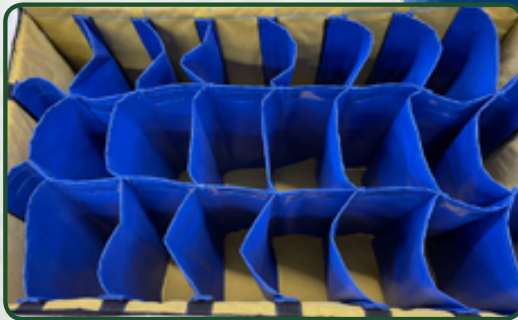
Features:

- 24 Individual Compartments For Running Shoes 5x8
- Optional Individual ID Windows for Each Compartment
- Fully Padded Walls with Foam
- I.D. window viewing 4.5x6.5
- Velcro Handle Closure
- #10 Zipper

DIMENSIONS: 4PADEDSHBLG - 40x24x18

FABRIC OPTIONS: Mercury or Cordura

COLOURS: Customization Available



MULTI SHOE/ MULTI SANDAL BAG

Features:

- Individual Compartments
- PVC Mesh for Ventilation
- End Straps
- Velcro Closure
- I.D. Window 4.5x6.75
- #10 Heavy Duty Zipper

Multi Shoe Bag: 4MSHB - 24 Individual Pockets - 5x8

SM Multi Shoe Bag: 4MSHB - 15 Individual Pockets - 5x8

Multi Sandal Bag: 4MULSAND - 24 Individual Pockets - 5x5

SM Multi Sandal Bag: 4MULSAND - 15 Individual Pockets - 5x5

FABRIC OPTIONS: Mercury or Cordura

COLOURS: Customization Available





DELUXE SHAVING KIT BAG

Features:

- I.D. Window 2.25x3.5

DIMENSIONS: 4SH1D - 12x6x6

FABRIC OPTIONS: 600 Denier, Cordura, or Mercury

COLOURS: Customization Available



SHAVING KIT BAG

Features:

- I.D. Window 2.25x3.5

DIMENSIONS: 4SH1 - 10x4x6

FABRIC OPTIONS: 600 Denier or Cordura

COLOURS: Customization Available



MONEY BAG

Features:

- Customization Available

DIMENSIONS: 4MON - 12x6

FABRIC OPTIONS: 600 Denier or Cordura

COLOURS: Customization Available

NEW

TOILETRY ORGANIZER

Features:

- I.D. Window 1x3.75
- #5 Zipper
- Reinforced Plastic Walls
- View Plast Lid

DIMENSIONS: 4TOILSHORG - 9x5.5x4

FABRIC OPTIONS: 600 Denier, Cordura, or Mercury

COLOURS: Customization Available



WET BAGS

Features:

- Reinforced Straps
- I.D. Window 4.5x6.75
- Velcro Handle Closure
- Mercury Reinforced Bottom

- #10 Heavy Duty Zipper

DIMENSIONS: 4WETB - 31x15x20

FABRIC OPTIONS: Vinyl Mesh

COLOURS: Customization Available



MESH LAUNDRY BAGS

Features:

- Velcro Closure or Zipper
- Sublimated I.D. Tags
- Customization Available

DIMENSIONS: 4LB - 25x25

COLOURS: Black, White, Red, Blue, Green, Orange, Sport Gold, Navy, Grey, Purple, Powder Blue

MESH LAUNDRY BAG WITH LOOP

Features:

- Zipper
- Sublimated I.D. Tags
- Loop
- Customization Available

DIMENSIONS: 4LBWL - 14x12

COLOURS: Black, white, red, blue, green, orange, yellow, navy, grey



DUAL FOLD ACCESSORIES BAG

Features:

- 10 Individual Compartments
- View Plast. Windows
- Folds for Easy Storage & Travel
- Fully Padded Walls
- Can be Made Into 6, 10, 12, 18 Compartments

DIMENSIONS: 4DUALACC - 10x6x16 Folded Up
FABRIC OPTIONS: 600 Denier, Cordura, or Mercury
COLOURS: Customization Available



DELUXE DUAL FOLD ACCESSORIES BAG

Features:

- 20 Individual Compartments
- View Plast. Windows
- Folds for Easy Storage & Travel
- Fully Padded Walls

DIMENSIONS: 4DUALACCD - 18x6x16 Folded Up
FABRIC OPTIONS: 600 Denier, Cordura, or Mercury
COLOURS: Customization Available



TRI-FOLD ACCESSORIES

Features:

- 14 Individual Compartments
- View Plast. Windows
- Folds for Easy Storage & Travel
- Fully Padded Walls
- #10 Heavy Duty Zipper

DIMENSIONS: 4TRIFACC - 19x10x19 Folded Up
FABRIC OPTIONS: 600 Denier, Cordura, or Mercury
COLOURS: Customization Available



WATER BOTTLE BAG

Features:

- Holds 30 Water Bottles
- Fully Padded Walls with Foam
- I.D. Window 2.75x4.75
- #10 Reverse Zipper

DIMENSIONS: 4MWATER - 20x17x11

FABRIC OPTIONS: Mercury or Cordura

COLOURS: Customization Available



DELUXE BENCH BAG

Features:

- 11 Interchangeable Compartments
- Compartments sizes:
4 - 9x8, 4- 9x6, 2- 5.5x6 and 1- 11.5x6
- Folds for Easy Storage & Travel
- Has 3 "D" Rings for Hanging
- Can Have Custom Made Compartments to Fit Individual Needs
- #10 Heavy Duty Zipper

DIMENSIONS: 4DELUXBEN - 16x18 Folded Up

FABRIC OPTIONS: Cordura or Mercury

COLOURS: Customization Available

ACCESSORIES COMPARTMENT BAGS

Features:

- Individual Compartment Size 6x6x5
- Individual I.D. Windows 2.25x3.5
- Designed to Hold Small Accessories
- Velcro Handle Closure
- Can be Made Into 6, 9, 12 Compartments
- #10 Heavy Duty Zipper

DIMENSIONS: 4ACCB6 - 6 Pocket - 12x18x5

4ACCB9 - 9 Pocket - 18x18x5

4ACCB12 - 12 Pocket - 24x18x5

FABRIC OPTIONS: 600 Denier, Cordura, or Mercury

COLOURS: Customization Available





SMALL ORGANIZER BAG

Features:

- Plastic Walls
- Clear View Top
- I.D. Window 1x3.75
- #5 Zipper

DIMENSIONS: 4ORGIN - 12x8x4

FABRIC OPTIONS: 600 Denier or Cordura

COLOURS: Customization Available

HAT ORGANIZER BAG

Features:

- Plastic or Foam Walls
- Clear View Top
- I.D. Window 1x3.75
- Holds Approx. 12-14 Hats
- #10 Heavy Duty Zipper

DIMENSIONS: 4HATOG - 15x8.5x6.5

FABRIC OPTIONS: 600 Denier or Cordura

COLOURS: Customization Available



EQUIPMENT ORGANIZER BAG

Features:

- I.D. Window 1x3.75
- Custom features available
- Reinforced Plastic Walls
- #10 Heavy Duty Zipper

DIMENSIONS: SINSKOB - 16x13.5x5

FABRIC OPTIONS: 600 Denier, Cordura

COLOURS: Customization Available

ORGANIZER BAG WITH ADJUSTABLE DIVIDER

Features:

- I.D. Window 1x3.75
- Custom features available
- Reinforced Plastic Walls
- #10 Heavy Duty Zipper

DIMENSIONS: ORGWDIV - 16x13.5x5

FABRIC OPTIONS: 600 Denier, Cordura

COLOURS: Customization Available



4ORTE



DELUXE SMALL TRUNK ELIMINATOR BAG

Features:

- Fully Padded Walls with Foam
- I.D. Window 2.75x4.75
- Can Hold 7 Small Organizer Bags
- #10 Reverse Zipper
- Velcro Loop Inner Lid
- Clear Zipper Removable Pouches That Can Also Interchange With Deluxe Bench Bag
- Includes The Following Pouches: 3 - 9x8, 2 - 9x6, 2 - 5.5x6

DIMENSIONS: 4TRUNKSDEL - 30x14x10

FABRIC OPTIONS: Mercury or Cordura

COLOURS: Customization Available

NEW

REVERSE ZIPPER FOR WEAR
RESISTANCE ON CORNERS
FOR ADDED LONGEVITY



MEDIUM TRUNK ELIMINATOR BAG

Features:

- Fully Padded Walls with Foam
- I.D. Window 2.25x3.5
- Hold 10 small organizer bags 12x8x4
- #10 Reverse Zipper

DIMENSIONS: 4TRUNKM - 44x14x10

FABRIC OPTIONS: Mercury or Cordura

COLOURS: Customization Available

MULTI EQUIPMENT TRUNKELIMINATOR BAG

Features:

- Fully Padded Walls with Foam
- Reinforced straps
- I.D. Window 2.25x3.5
- HOLDS 6 ORGANIZER BAGS 16x13.5x5
- OR HOLDS 8 ORGANIZER BAGS 15x8.5x6.5
- #10 Reverse Zipper

DIMENSIONS: 4MULTISKBAG - 28x18x16

FABRIC OPTIONS: Mercury or Cordura

COLOURS: Customization Available



LARGE TRUNK ELIMINATOR BAG

Features:

- Fully Padded Walls with Foam
- I.D. Window 2.25x3.5
- Holds 16 small organizer bags 12x8x4
- #10 Reverse Zipper

DIMENSIONS: 4TRUNKL - 36x26x10

FABRIC OPTIONS: Mercury or Cordura

COLOURS: Customization Available



NEW

MESSAGE TABLE BAG

Features:

- Fully Padded Walls with Foam
- Carry shoulder strap
- I.D. Window 2.75x4.75
- #10 Zipper

DIMENSIONS: 4MASS - Fully Customized to Fit Table

FABRIC OPTIONS: Mercury or Cordura

COLOURS: Customization Available



MULTI HAT BOX

Features:

- Fully Padded Walls with Foam
- I.D. Window 2.25x3.5
- Holds 72 Hats with a Divider
- Customizing Available
- #10 Reverse Zipper

DIMENSIONS: 4MHBOX - 26x19x6

FABRIC OPTIONS: 600 Denier or Cordura

COLOURS: Customization Available

INDIVIDUAL GARMENT BAG

Features:

- Holds 1 Suit
- I.D. Window 2.25x3.5
- #10 Heavy Duty Zipper

DIMENSIONS: 4IGARB - 26x19x6

FABRIC OPTIONS: 600 Denier, Cordura or PVC Mesh

COLOURS: Customization Available



CUSTOM SUIT BAG

Features:

- Holds 2 Suits
- High End Wally Lock for Hang Lock
- I.D. Window 2.25x3.5
- 2 External Zipper Pockets
- #10 Heavy Duty Zipper

DIMENSIONS: 4SUITB - HOLDS 2 SUITS

FABRIC OPTIONS: 600 Denier or Cordura

COLOURS: Customization Available



HANG LOCK

MULTI CELL PHONE BAG

Features:

- 24 Cell Phone Compartments (With Latest Cell Phone Sizes)
- I.D. Window on Each Compartment
- Rolls Up for Easy Storage
- Customizing Available

DIMENSIONS: 4CELLBAG - HOLDS 24 PHONES

FABRIC OPTIONS: 600 Denier or Cordura

COLOURS: Customization Available



DELUXE

REGULAR

EM HIP ORGANIZER

Features:

- View Plast. Pockets
- Can be Made Into 4, 6 Pockets
- Deluxe Come With Tool Pockets

DIMENSIONS: 10x3x7

FABRIC OPTIONS: 600 Denier or Cordura

COLOURS: Customization Available



SAND WEIGHT BAG

Features:

- Holds One 50lb Bag of Sand
- Reinforced Straps
- Velcro Handle Closure
- #10 Heavy Duty Zipper

DIMENSIONS: 4SAND - 23x16x4

FABRIC OPTIONS: Mercury

COLOURS: Customization Available



WE CUSTOMIZE TO MEET YOUR NEEDS

UPGRADABLE OPTIONS INCLUDE THE FOLLOWING

WEBBING OPTIONS



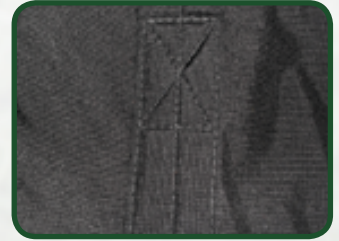
STANDARD NYLON



2 COLOR WEBBING

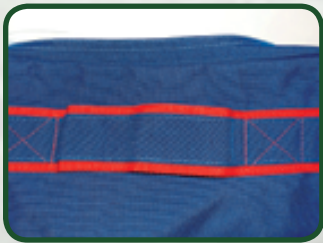


CORDURA ON WEBBING



PADDED CORDURA

END STRAP OPTIONS



STANDARD NYLON
2 COLOR SHOWN



PADDED CORDURA

PIPING OPTIONS



STANDARD



CORDURA WRAPPED

ZIPPER OPENING OPTIONS



STRAIGHT

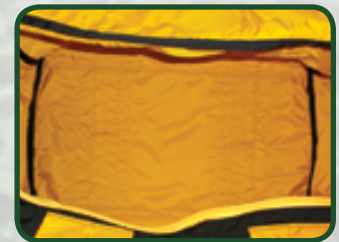


C - SHAPED OPENING

INSIDE OPTIONS



STANDARD



CONTRASTING LINER

INSIDE SKATE POCKETS



ZIPPER



STANDARD

3 COLOUR STRAPS



PADDED



WEBBING



CORDURA COLOUR CHART

ACTUAL COLOURS MAY VARY SLIGHTLY



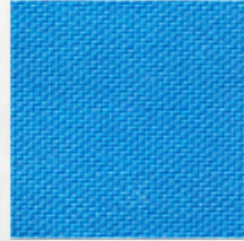
BLACK



WHITE



FOREST GREEN



COLUMBIA BLUE



ORANGE



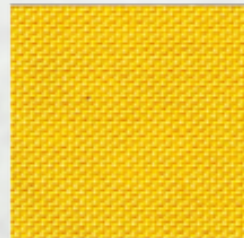
AVIATOR



MAROON



NAVY



YELLOW



MARINER



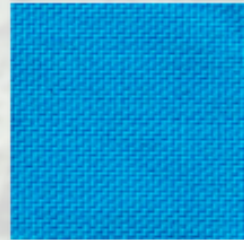
SILVER



MEDIUM BLUE



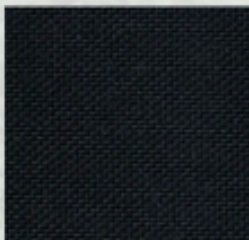
RED



TURQUOISE



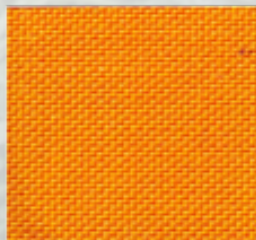
CAMO



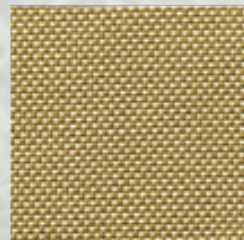
MIDNIGHT NAVY



KELLY GREEN



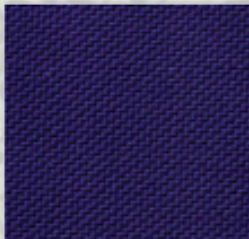
SPORT GOLD



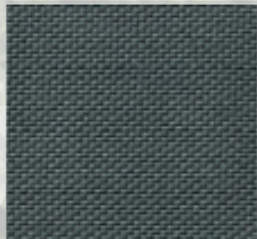
BEIGE



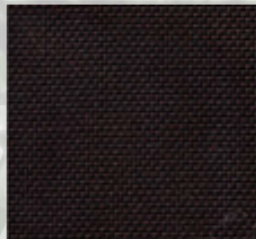
BRICK RED



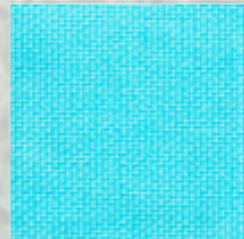
PURPLE



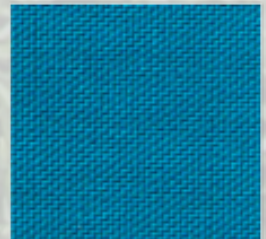
SMOKE



BROWN



SPA BLUE



TEAL

4ORTE

A TOUGH WORLD DEMANDS A DURABLE FABRIC.

With high tenacity fiber technology, exceptional tear strength and outstanding abrasion resistance, CORDURA® fabric adds tough-as-nails durability to your luggage. The kind of durability every traveler wants, but not all fabrics can deliver. So remember, accept no substitutes. For more on our durable fabric technologies, visit CORDURA.com



CORDURA
F A B R I C

PHONE: 519-455-4141
1-877-94-4ORTE (6783)
FAX: 519-455-5903

50 CHARTERHOUSE CR. UNIT 2
LONDON ONTARIO CANADA
N5W 5V5

WWW.4ORTE.COM